



WATER STRATEGY FOR COUNTY KILDARE

Review of existing water supply systems in association with Tobin Consulting Engineers

Client: Kildare County Council

SUMMARY:

Value: €160 million

Status: Report Submitted

Services Provided:

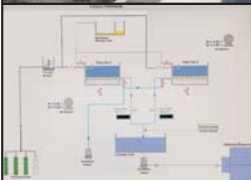
- Assessment of existing water supply system
- Assessment of future water demand
- Assessment of water treatment requirements
- Identification, analysis of potential surface water, groundwater sources
- Development of water distribution strategy to satisfy future requirements
- Preparation of water distribution models
- Economic assessment and phasing

This project involved the review of existing water supply systems and the development of a county wide strategy to satisfy the future water supply needs of the county. The water demand was projected to increase from approximately 55 Megalitre/day to over 100 Megalitre/day over the 20 year design period. This was as a result of Kildare's location to the Greater Dublin Area and the associated development pressures within the county.

A detailed assessment of available groundwater and surface water sources was carried out and identified the development of a number of wellfields (total yield 18 Megalitre/day) and the River Barrow (40 Megalitre/day) as new water sources to augment existing supplies from the River Liffey (50 Megalitre/day).

The strategy also identified the infrastructure needed to distribute water throughout the county and provide the necessary security of supply. The main works identified were as follows and were estimated at €160m:

- 40 Megalitre/day Water Treatment Plant on the River Barrow
- 18 Megalitre/day Wellfield Development
- 40 Megalitre Reservoir Storage
- 240km of 1000mm to 150mm dia. pipelines



Nicholas O'Dwyer
CONSULTING ENGINEERS