



LOUGH MOURNE & LETTERKENNY REGIONAL WATER SUPPLY SCHEME

Client: Donegal County Council

SUMMARY:

Value: €60 million approximately

Status: Preliminary Design and Planning stage

Services Provided:

Preliminary Report,
EIS, Water Abstraction Order,
Compulsory Purchase Order,
Project Management

Nicholas O'Dwyer Ltd. in association with Ferguson McIlveen were appointed by Donegal County Council to carry out a water study for North Donegal including the towns of Ballybofey, Stranorlar, Lifford and Letterkenny. The study reviewed existing demand and projected future demand based on population, commercial, industrial and agricultural growth to the year 2030. The proposed scheme will cater for a future population of 74,000 persons and will require the development of major water supply resources. Following a detailed assessment of potential sources, Lough Mourne was identified as the preferred option to satisfy the future demand.

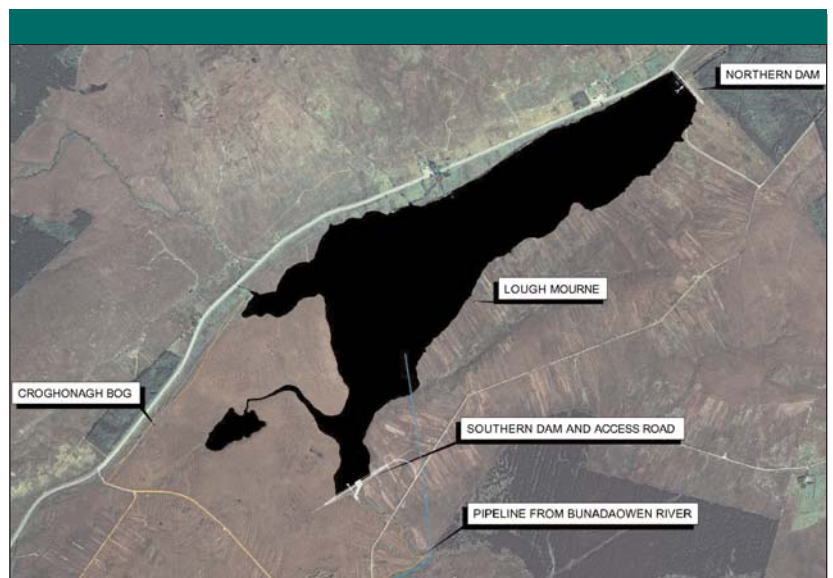
The proposed development involves increasing the water level in the lake by 4.5m through the construction of embankments at the northern and southern ends of the lake and the diversion of part of the flow from the adjacent Bunadaowen River.

The northern dam will incorporate a draw off tower to supply water to the water treatment works at Meencrumlin. The southern dam will incorporate a spill weir, fish pass and draw off tower to ensure that adequate compensation flows are released downstream of the impoundment to the Mourne Beg river.

Also included in the scheme are:

- 32 MLD Water Treatment Plant
- 35km of 700-300mm trunk mains
- 18,000m³ additional Reservoir storage

The Development at Lough Mourne has successfully completed the planning stage where an Environmental Impact Statement (EIS), Water Abstraction Order and Compulsory Purchase Order have been approved.



Nicholas O'Dwyer
CONSULTING ENGINEERS