



M4 TOLL PLAZA AND MAINTENANCE FACILITY

Administration building for the operation of the M4 Motorway

Client: Eurolink

SUMMARY:

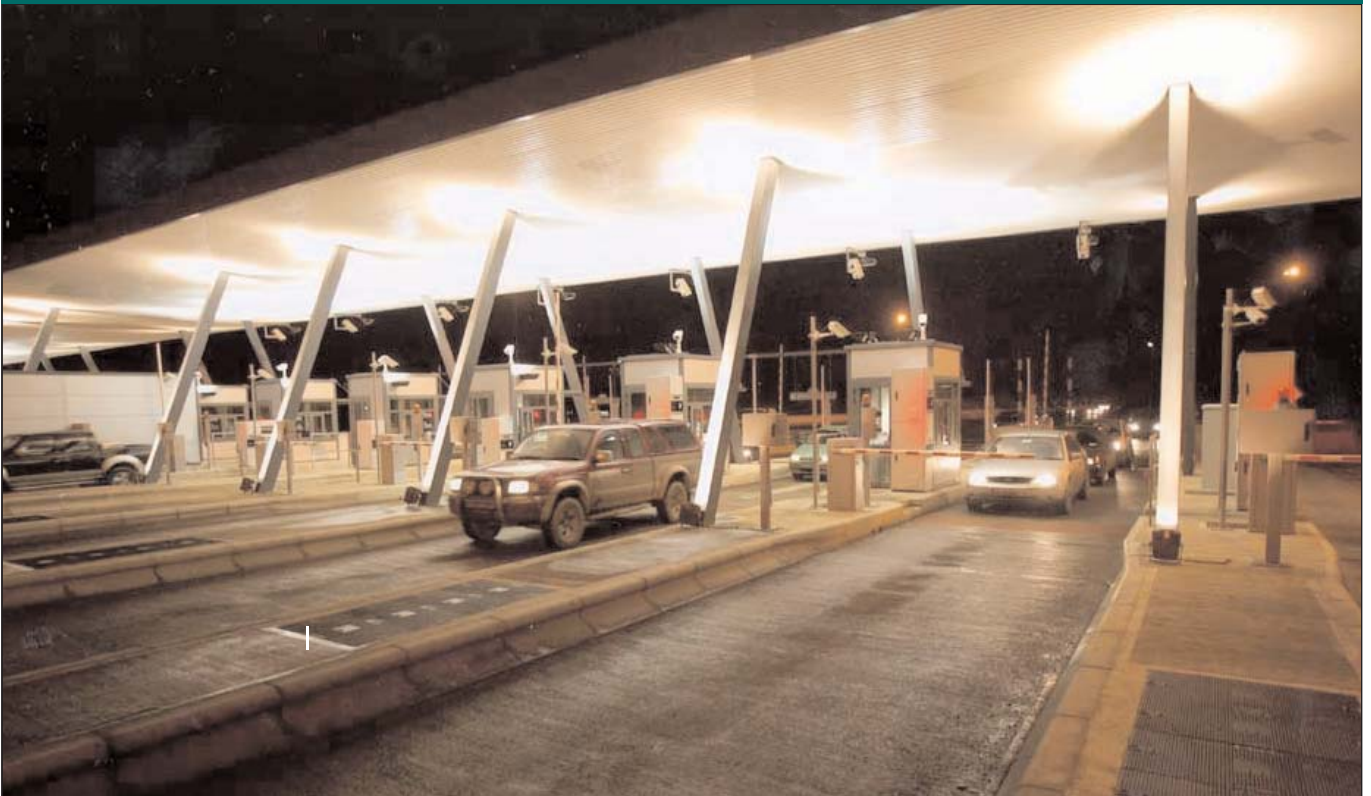
Value: €10 million (excess)
Architect: Nicholas O'Dwyer
Status: Complete

Services Provided:
Design Report
Detailed Design
Construction Supervision

This project involved the construction of a two storey administration building in two blocks for the operation of the M4 motorway between Kilcock and Kinnegad. As part of this package of work, Nicholas O'Dwyer are responsible for designing the Toll Plazas, Control Buildings and Infrastructure.

As well as all the building structures we are also responsible for the design of the drainage, sewage and services, including power distribution, air conditioning to the booths, underground telecoms and related services.

We have provided all necessary design services including roads, structures and infrastructure. Nicholas O'Dwyer prepared full tender documents, including Bills of Quantities in house. All works are supervised on site by our Resident Engineer.



Nicholas O'Dwyer
CONSULTING ENGINEERS