



RUVUVU RIVER BRIDGE

Construction of Bridge, Kobero, North West Tanzania

Client: Ministry of works - Tanzania

SUMMARY:

Value: €4.5 million
Status: Complete 1995
Finance: EU / EDF
Contractor: Cogefor, SpA, Italy

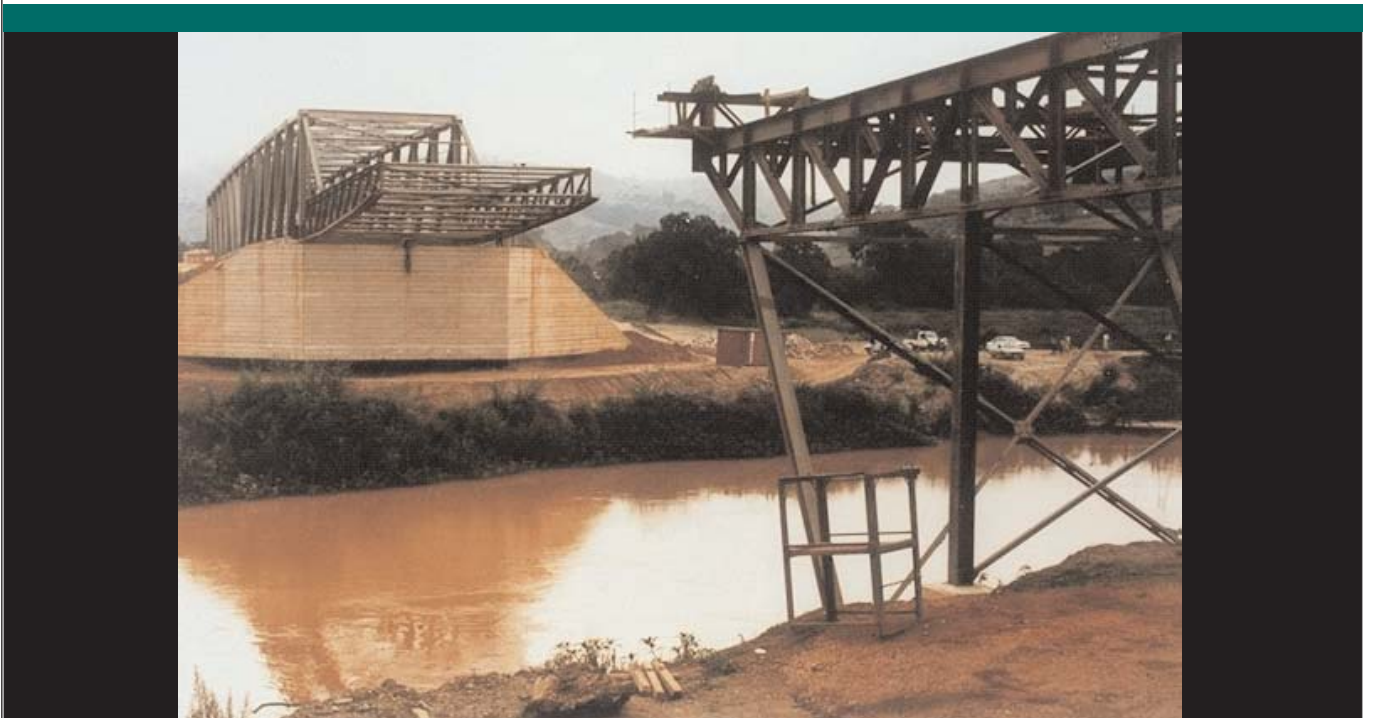
Services Provided:
Supervision Control and Coordination
Design and Foundation Detailing
Quality Control and Testing
Site Measurement and Certification

Narrative Description of Project:

Construction of single span 90 metre River bridge over Ruvuvu River. Bridge superstructure was of structural steel truss which was launched after assembly on the southern approach embankment. Abutments were built in R.C. founded on 900 mm diameter cast in situ R.C.piles constructed to a depth of 30 metres.

Description of Actual Services Provided by Staff:

Redesign of bridge substructure and superstructure to suit the actual site conditions that were not investigated during the design stage carried out by others. New site investigation works, testing and analysis determined the new foundation design. Cast in situ piles had a permanent lining to avoid scour during construction due to sub-strata flows under the river bed.



Nicholas O'Dwyer
CONSULTING ENGINEERS